



Sustainability Reporting

CONTENT

1. About the Report
2. Facility Introduction and Features
3. Sustainability Team
4. Reducing Environmental Impacts
5. Personnel and Work Life
6. Social Activities
7. Cultural Activities

About the Report

As of 2023, we have initiated our sustainability efforts. We aim to share the progress achieved with our management, employees, guests, suppliers, and all stakeholders, thereby increasing awareness and transforming it into shared goals and achievements.

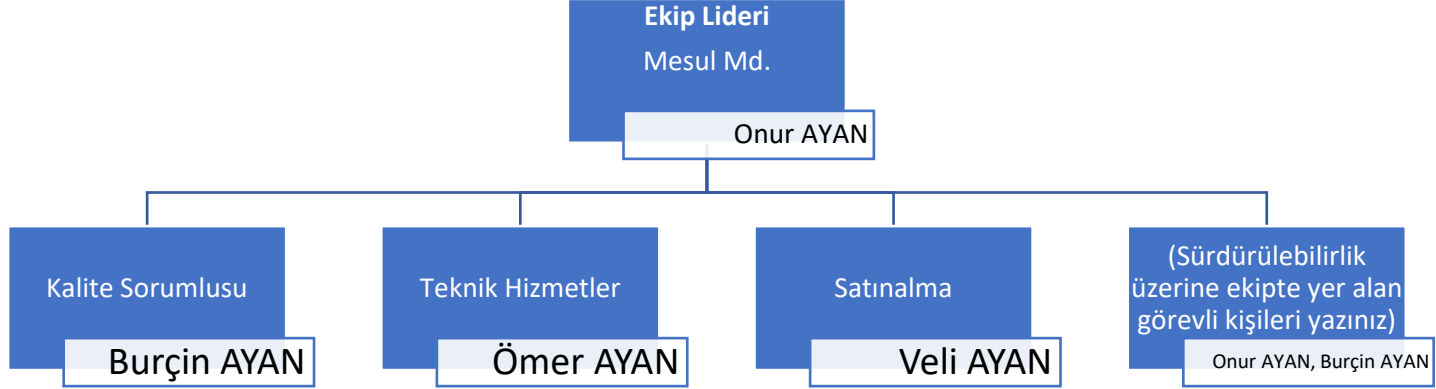
This sustainability report includes data covering the years 2023–2024.



2. Facility Introduction and Features

Our guesthouse offers a pleasant accommodation experience with its modern rooms. It is located on the shores of Sapanca Lake, in Eşme neighborhood—one of the most beautiful areas of Kartepe. It features a swimming pool, barbecue area, fire pit, and a private dock. It provides guests with a peaceful holiday experience in nature.

1. Sustainability Team



2. Reducing Environmental Impacts

Environmental management, compliance with legal obligations, and chemical management are implemented within the scope of sustainability.

Waste management is ensured through waste separation bins.

Water management is supported with stickers in Turkish and English stating “Save water, protect your future.”

Energy management is supported with stickers stating “Save energy” placed near sockets and switches.



3.



4. Personnel and Work Life

After applying for the Sustainable Tourism Certificate, all personnel received training. Roles and responsibilities regarding sustainability were assigned. All employees are Turkish citizens. We maintain gender balance: 50% male and 50% female staff.

Social Activities

After training, meetings were held and tasks were distributed. An employee contributing most to sustainability is rewarded monthly.

Cultural Activities

A board in the lobby provides information about nearby attractions.

